



# Windprotection Systems and Doors

CURTAINS AND TEXTILE DOORS



## AGROTEL - that's us

AGROTEL is your specialist for textile solutions in agriculture, environmental technology, trade and industry.

For over 30 years we have been developing and producing individual windprotection solutions and doors made of technical textiles with the aim of creating more well-being and comfort for animals and farmers. We are the pioneers in this sector and, as an internationally active family business we stand for the quality and durability of our products.

All our products are developed, planned and manufactured in our own factory at our site in Neuhaus am Inn (DE), Lower Bavaria. We are your expert in the field of barn ventilation and animal welfare. Our diverse product range extends from curtains, roller doors, sliding doors and folding doors up to a wide variety of wind protection nets and illumination and ventilation ridges as well as hose ventilation. We find the best solution for every requirement and operate according to the "all from one source" principle with the AGROTEL manufacturer's guarantee.

AGROTEL's quality and environmental management are certified according to ISO 9001 and ISO 14001.



From left to right: Valentin Schmedleitner, Elisabeth Laner, Cyriak Laner



# Welcome



# AGROTEL – that's what sets us apart

**AGROTEL has been the market leader in the field of textile side-wall ventilation systems and doors in agriculture for over 30 years. You can rely on our wealth of experience. Together with you, we develop the best solution for your barn.**



## Production Made in Germany

With our unique technical-textile confection with production machines that are state of the art, the company owned steel construction, the in-house locksmith as well as a warehouse and logistics center at our site in Bavaria we can guarantee optimum quality and flexibility. Side-wall ventilation systems can be technically welded together in one working process up to 120 m length.

## Consulting, Planning and Project Management

Our qualified consultants will find the most suitable solution according to your wishes and requirements.



## Technical Construction

With our experienced staff in our in-house construction and statics department, we can react flexibly to your needs and also offer our support with the official approval of your project.



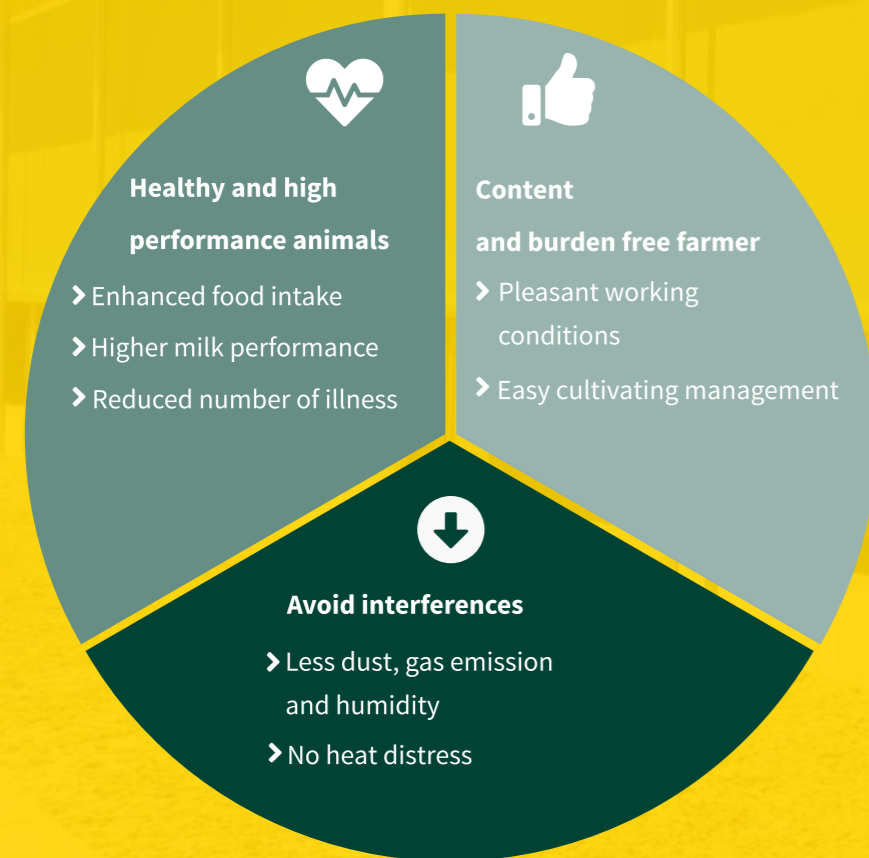
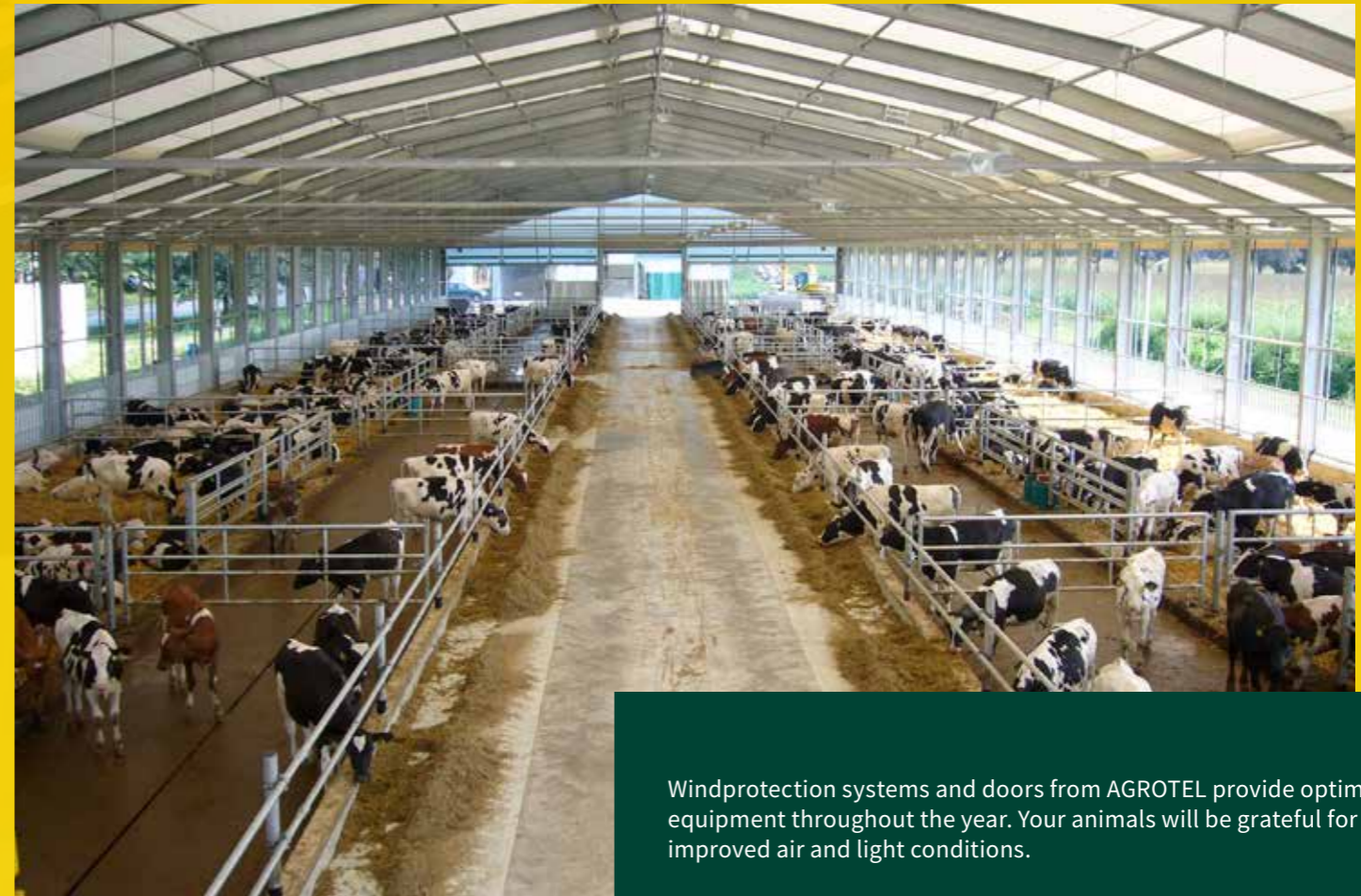
## Assembly & Service

Our own assembly teams take care of the professional installation of your project and with their know how ensure a professional result.



# Light and air in animal husbandry

Live stock needs the best possible living conditions in order to fully exploit their performance potential. Key factors such as sufficient light and aeration play a crucial role here. Windbreak systems and gates from AGROTEL create optimum conditions in your barn which result in multiple advantages.



Windprotection systems and doors from AGROTEL provide optimal equipment throughout the year. Your animals will be grateful for the improved air and light conditions.

## Advantages

- ⊕ Customized for your needs and requirements
- ⊕ Fitting Systems for every purpose
- ⊕ Optimum usage of natural airflow
- ⊕ Sufficient fresh air supply – without draft
- ⊕ Flexible control of air supply – variable adjustment
- ⊕ Simplification of farm management – work simplification
- ⊕ Durable and robust solution – high quality workmanship
- ⊕ Cost-efficiency: energy saving with natural ventilation

## Features

What distinguishes ourselves from others is the quality – we use high quality technical textiles for all our products.

- » Polyester fabric with synthetic coating, lacquered on both sides
- » Fire retardant with a low flammability according to B1
- » UV stability and weather resistance
- » High tear resistance, area stability and very good welding seam adhesion
- » Fabrication of the tarpaulin according to DIN 18204-1 – high-frequency welded

# WSS1

## System 1

### AREAS OF APPLICATION

- » Side-wall ventilation and covering for areas where livestock is not kept next to the wall at all times

### ADVANTAGES

- ⊕ System can be raised completely
- ⊕ Simple application, compact construction
- ⊕ Optimum cost performance ratio
- ⊕ Technical textile with either net, tarpaulin or a combination of both
- ⊕ Optional: automatic sensor control system



### FEATURES

- » Max. length: 120 m
- » Max. height: 4 m
- » Winding method: opening from top to bottom, the sheeting is either overlapping or folded together
- » Type of the drive: plug in motor or geared motor



### FEATURES

- » Max. length 120 m
- » Max. height: 6 m
- » Winding method: opening from bottom to top
- » Type of the drive: plug-in motor or geared motor

# WSS2

## System 2

### AREA OF APPLICATION

- » Side-wall ventilation and covering for installations with greater pedestal height



### ADVANTAGES

- ⊕ Ventilation from top to bottom, air tight at pedestal / to prevent direct drafts
- ⊕ Optimum cost performance ratio
- ⊕ Technical textile is made of tarpaulin
- ⊕ Optional: automatic sensor control system

# WSS3 Thermocurtain

## AREAS OF APPLICATION

- » For milking parlours and waiting areas
- » For regions with low temperatures or wind exploited locations
- » For barns which need protection against cold temperatures

## ADVANTAGES

- ⊕ Thermal and acustical insulation by air chambers
- ⊕ Enabling fresh air supply even during the cold season
- ⊕ Can be opened up to 30 cm in insulated position
- ⊕ For summer operation the system can be moved downwards completely



## FEATURES

- » Max. lenght: 120 m
- » Max. height: 4,5 m
- » Winding method: allrounder, opening possible from top and bottom, middle position for shadowing
- » Type of drive: plug-in motor or geared motor

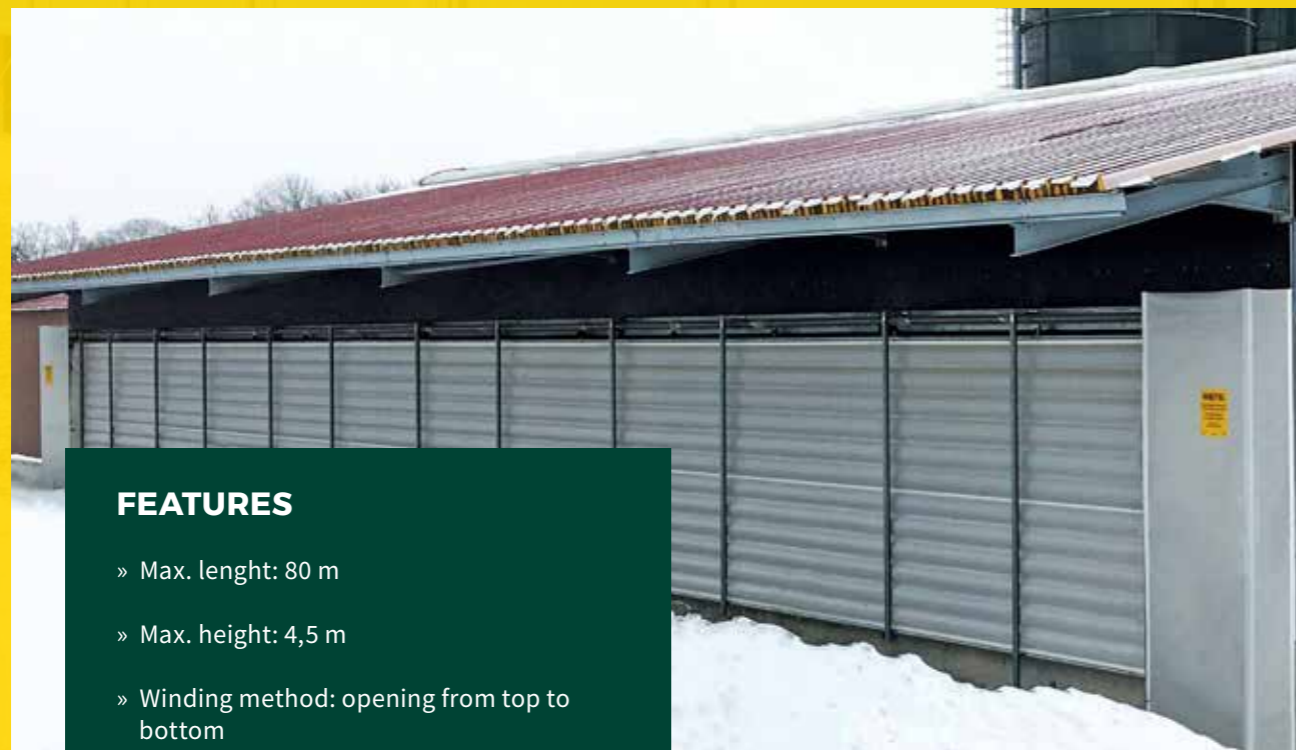
# WSS4 System 4

## AREAS OF APPLICATION

- » Versatile applications in all barns

## ADVANTAGES

- ⊕ Offers multiple possibilities, versatile applications
- ⊕ Maximum space utilisation
- ⊕ Complete ventilation and shading functionality
- ⊕ Little mounting space
- ⊕ Perfectly suitable for existing buildings
- ⊕ Technical textile is made of tarpaulin
- ⊕ Optional: automatic sensor control system



## FEATURES

- » Max. lenght: 80 m
- » Max. height: 4,5 m
- » Winding method: opening from top to bottom
- » Type of drive: plug-in motor or geared motor



# WSS5

## System 5

### AREAS OF APPLICATION

- » System for large lateral openings

### ADVANTAGES

- + Offers multiple possibilities, versatile applications
- + Maximum space utilisation
- + Complete ventilation and shading functionality
- + Very robust even in large installations
- + Technical textile is made of tarpaulin
- + Optional: automatic sensor control system



### FEATURES

- » Max. length: 120 m
- » Max. height: 6 m
- » Winding method: allrounder, opening possible from top and bottom
- » Type of drive: plug-in motor or geared motor

# WSS 5.1

## Ventilation Door

### AREA OF APPLICATION

- » Ventilation as system 5 and access door

### ADVANTAGES

- + Wide spacing of the supports enable easy access and drive-through possibility
- + Usable as side-wall ventilation as well as door
- + Complete ventilation and shading functionality
- + Highly robust
- + Technical textile is made of tarpaulin
- + Optional: automatic sensor control system



### FEATURES

- » Max. length: 120 m
- » Max. height: 6 m
- » Winding method: allrounder, opening possible from top and bottom, middle position for shadowing
- » Type of drive: plug-in motor or geared motor



### FEATURES

- » Max. lenght: 10 m
- » Max. height: 4,5 m
- » Top and bottom fork jig ensures stability and easy closing of the curtain
- » Manual operation



## WST1 Sliding Curtain

### APPLICATION AREA

- » Small openings which are not highly frequented

### ADVANTAGES

- ⊕ Cost effective solution for smaller openings
- ⊕ Optimum cost-performance ratio
- ⊕ Little mounting space needed
- ⊕ Easy assembly
- ⊕ Maximum space utilisation
- ⊕ Technical textile with either net, tarpaulin or a combination of both

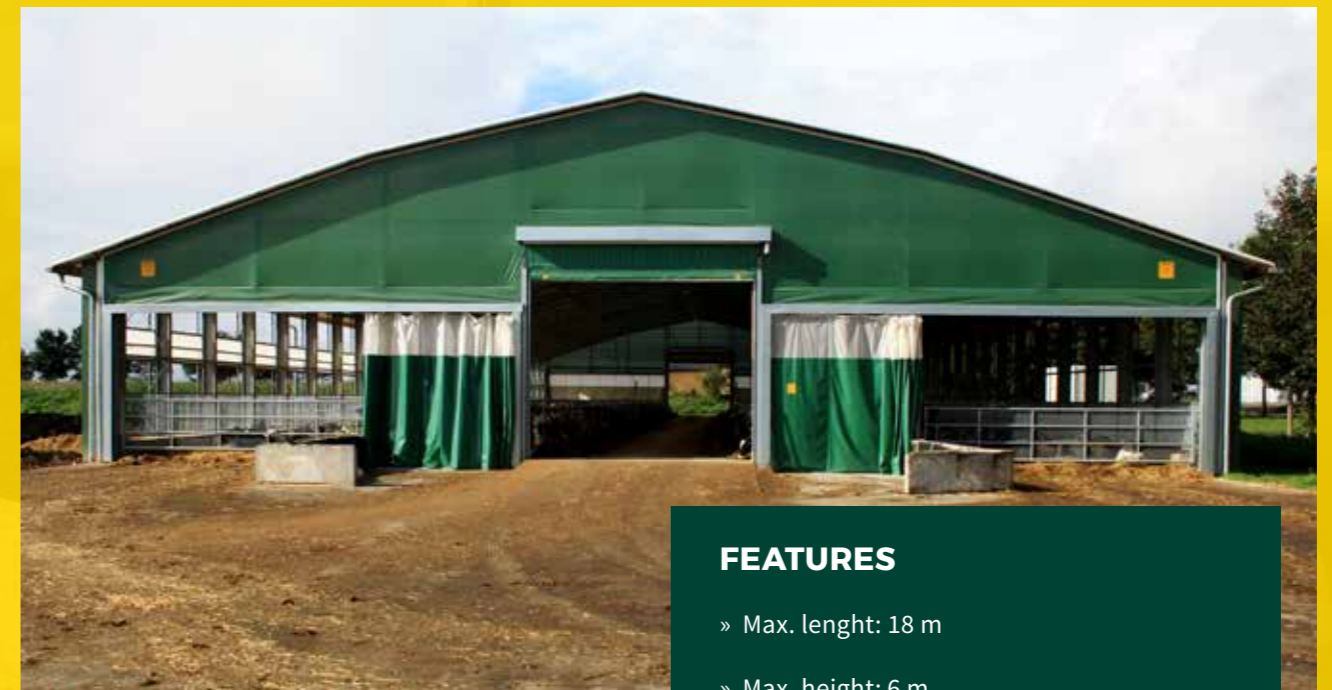
## WST2 Sliding Door

### AREAS OF APPLICATION

- » Stability for larger openings which are not highly frequented

### ADVANTAGES

- ⊕ Little mounting space needed
- ⊕ Robust, compact and windproof version
- ⊕ Easy assembly
- ⊕ Technical textile with either net, tarpaulin or a combination of both



### FEATURES

- » Max. lenght: 18 m
- » Max. height: 6 m
- » Integrated reinforced steel profiles with bayonet anchors for extra stability; Curves and roundings up to 90° angles are possible
- » Manual control





### FEATURES

- » Max. width: 8 m singlefield, 50 m multifold
- » Max. height: 6 m
- » Fixed mounting on top, winding shaft in the middle, stiffening tube with overhang lobes in the lower area
- » Remote control available
- » Type of drive: plug-in motor or geared motor

## WST4 Double Roll Up Door

### AREAS OF APPLICATION

- » Versatile applications e.g. storage halls, machine halls
- » Doors for large openings and maximum usability

### ADVANTAGES

- ⊕ Little mounting space needed
- ⊕ Optimum cost performance ratio
- ⊕ Very large span widths



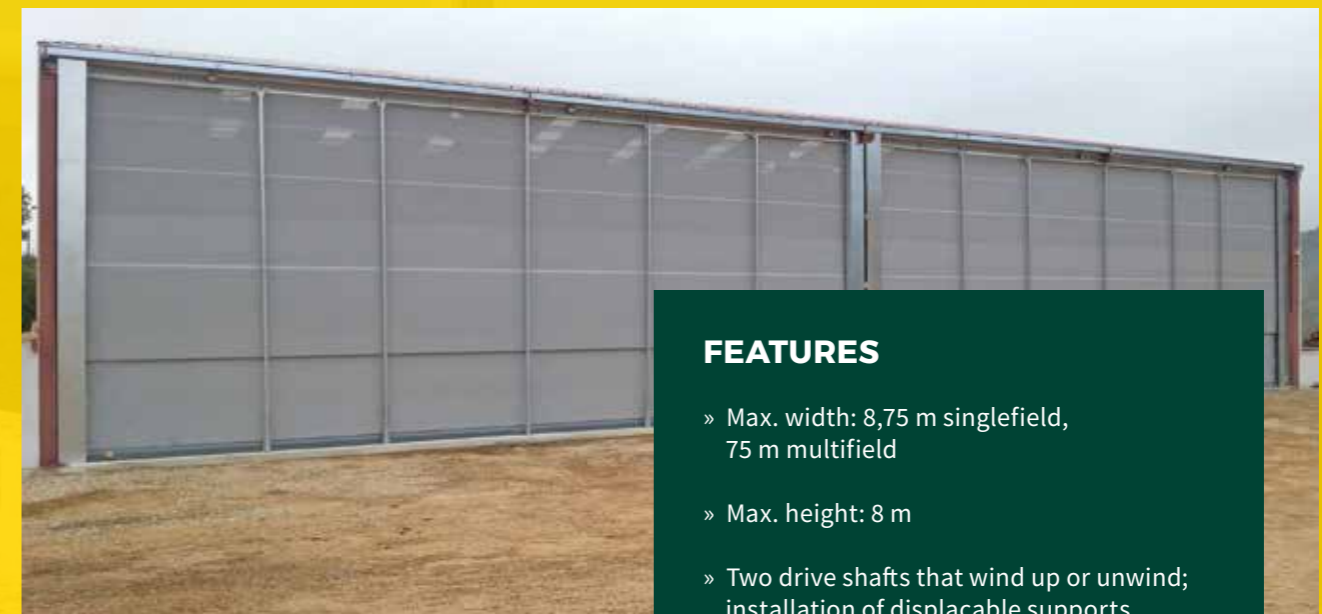
## WST11 Double Double Roll Up Door

### AREAS OF APPLICATION

- » Machine halls
- » Storage halls
- » For large openings

### ADVANTAGES

- ⊕ Very stable and robust withstanding even heavy wind loads
- ⊕ Large gateways / span widths with few pillars necessary
- ⊕ Movable bracing
- ⊕ Compact design



### FEATURES

- » Max. width: 8,75 m singlefield, 75 m multifold
- » Max. height: 8 m
- » Two drive shafts that wind up or unwind; installation of displaceable supports possible for extra stability
- » Radio remote control available
- » Type of drive: plug-in motor or geared motor



### MERKMALE

- » Max. width 4,5 m (standard), until 5 m with manual chain hoist
- » Max. height 4,5 m (standard), until 6 m at a width of 4 m
- » Integrated stiffening tubes for extra stability; the pipes are guided laterally in u-profiles with sealing brushes
- » Radio remote control available
- » Type of drive: plug-in motor

## WST7 Rib Roll Up Door

### AREAS OF APPLICATION

- » Barns
- » Service aisles
- » Hall entrance doors

### ADVANTAGES

- ⊕ Optimum cost performance ratio
- ⊕ Fast assembly
- ⊕ Very stable and robust door
- ⊕ Little mounting space needed



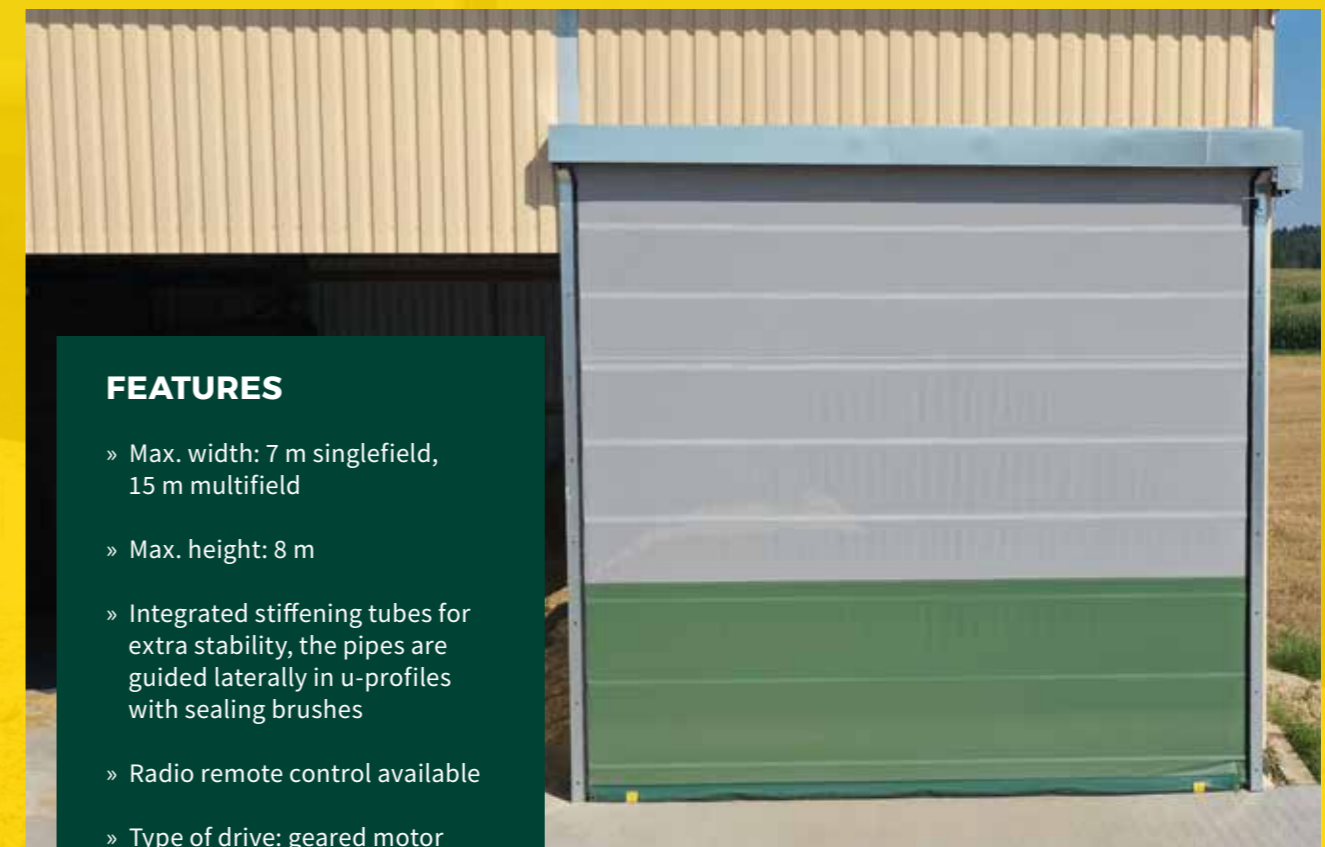
## WST9 Big Rib Roll Up Door

### AREAS OF APPLICATION

- » Feeding table
- » Garage
- » Machine hall

### ADVANTAGES

- ⊕ Very stable and robust door
- ⊕ Fast-moving door – high opening and closing speed



### FEATURES

- » Max. width: 7 m singlefield, 15 m multifield
- » Max. height: 8 m
- » Integrated stiffening tubes for extra stability, the pipes are guided laterally in u-profiles with sealing brushes
- » Radio remote control available
- » Type of drive: geared motor

# WST6

## Folding Door

### AREAS OF APPLICATION

- » Large openings where no intermediate supports are wanted

### ADVANTAGES

- ⊕ Freestanding / unclamped
- ⊕ Large door openings
- ⊕ Big entrance gateways with few pillars necessary
- ⊕ High wind stability



### FEATURES

- » Max. length:  
60 m vertical panel,  
30 m horizontal panel  
40 m gable triangle
- » Max. height:  
8 m vertical and horizontal  
panels,  
12 m gable triangle

# Panels

### AREAS OF APPLICATION

Panels are fixed textile wall coverings which can be used in all areas where there is no need to open the side walls, e.g. as gable, side walls, as dust protection, in production halls, in riding arenas.

### ADVANTAGES

- » Enable optimum lighting and air conditions
- » Flexible use, individual confection
- » Technical textile with either net, tarpaulin or a combination of both



### FEATURES

- » Max. width: 15 m, 25 m with stiffening column in the middle
- » Max. height: 10 m
- » Welded-on straps are provided with ball bearing mounted rollers, are connected by a chain via a gear wheel guided from bottom to top, Optional: movable supports
- » Radio remote control available
- » Type of drive: geared motor

# Light- and Ventilation Ridge

AGROTEL's Illumination and Ventilation Ridge completes the aeration concept. This sophisticated design creates a very good chimney effect and used air is efficiently evacuated. The natural thermal of the stable is used optimally.

## CONSTRUCTION

Stable construction using aluminium arches; can be installed on membrane halls as well as on conventionally roofed buildings

## ADVANTAGES

- ⊕ Ideal evacuation of used air
- ⊕ Avoids excessive heating of the building
- ⊕ Optimum fresh air supply
- ⊕ Provides very good illumination conditions



## FEATURES

- » Width: 160 cm
- » Length per driving motor: up to 80 m
- » Available versions: double sided model and single sided model
- » Sheeting: white technical textile (fire retardant with a low flammability, anti mildew treated, antistatic, UV stability, special coating against heat)
- » Type of drive: geared motor in combination with rack mechanism



# Softair Hose Ventilation System

The AGROTEL - Softair hose ventilation is a cost-saving, yet efficient way to improve the supply of fresh air for poorly ventilated stables, either as additional ventilation or as dynamic overpressure ventilation. During the summer months the Softair hose ventilation provides cooling and therefore contributes to the well-being, comfort and health of your live stock. Especially in old buildings the installation of the hose ventilation system is beneficial.

## ADVANTAGES

- ⊕ Higher level of animal welfare
- ⊕ Reduction of drug and veterinary costs
- ⊕ Avoidance of heat distress
- ⊕ Easy cleaning of the material
- ⊕ Low initial costs
- ⊕ Precise supply of fresh air

## FEATURES

- » Openings for the air emission are confectioned according to the intended purpose and calculation
- » Diameters available from 30 – 125 cm
- » Ventilator types from 2.800 m<sup>3</sup>/h – 25.000 m<sup>3</sup>/h
- » Adjustable speed control for ideal air emission

# Our materials

Depending on our customer's wish and area of use all our materials (tarpaulin or net) and all colours can be combined in any way.

## TECHNICAL TEXTILES

### NETS



WSN6060  
Green  
Porosity: 60 %  
Wind breaking effect: 60 %



WSN5095  
White  
Porosity: 50 %  
Wind breaking effect: 80 %



WSN5095  
Beige  
Porosity: 50 %  
Wind breaking effect: 80 %



WSN5095  
Green  
Porosity: 50 %  
Wind breaking effect: 80 %



WSN5095  
Brown  
Porosity: 50 %  
Wind breaking effect: 80 %



WSN5095  
Grey  
Porosity: 50 %  
Wind breaking effect: 80 %



WSN5095  
Black  
Porosity: 50 %  
Wind breaking effect: 80 %



WSN1595  
Dark green  
Porosity: 15 %  
Wind breaking effect: 85 %



WSN1595  
Beige  
Porosity: 15 %  
Wind breaking effect: 85 %

### TARPAULIN



WSPVC95  
Green transparent  
Polyester fabric with  
PVC coating



WSPVC60  
Light grey transparent  
Polyester fabric with  
PVC coating



WSPVC70  
Transparent  
Polyester fabric with  
PVC coating



WSPVC85  
Beige-transparent  
Polyester fabric with  
PVC coating



WSPVC50  
Black-transparent  
Polyester fabric with  
PVC coating



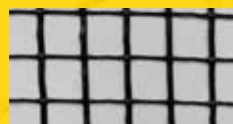
WSPVC80  
Beige  
Polyester fabric with  
PVC coating



WSPVC90  
Green  
Polyester fabric with  
PVC coating



WSPVC40  
Brown  
Polyester fabric with  
PVC coating



WSG2020  
Available in black or grey  
Bird- or game protection grid  
Mesh width: 20 x 20 mm

# Drives

The AGROTEL wind protection systems are operated either with a plug-in drive or with a geared motor. Which motor is used depends on the type and size of the system. All motors are specially adapted to AGROTEL systems and doors.



Geared motor



Plug in drive

# Tensioning

Our high-quality and particularly robust tensionings ensure excellent stability and durability.

- » Consisting of galvanized steel and a rubber protection
- » Thickness between 20 and 100 mm, depending on the situation and dimension



Tensioning Type 20



Tensioning Type 35



Tensioning Type 50



Tensioning Type 100

# Certificates

In order to ensure the highest quality and functionality of our products, we undergo various assessments. Our products are TÜV and CE certified and AGROTEL's quality management and environmental management are certified according to ISO 9001 and ISO 14001.



# Typical applications

## CHICKEN FARMING



Poultry farm

## PIG FARMING



Pig free-range farming

## CATTLE FARMING



Beef fattening farm „animal welfare award 2020“

## DAIRY CATTLE FARMING



Doors at a dairy cattle barn

## GOAT FARMING



Textile goat barn with wind protection systems

## OUR OFFERS IN THE FIELD OF STABLE CONSTRUCTION



AGROTEL comfort barn for dairy cattle



AGROTEL Cosyhome calf home



# Windprotection Systems Textile Doors

CURTAINS AND TEXTILE DOORS

## **AGROTEL GMBH**

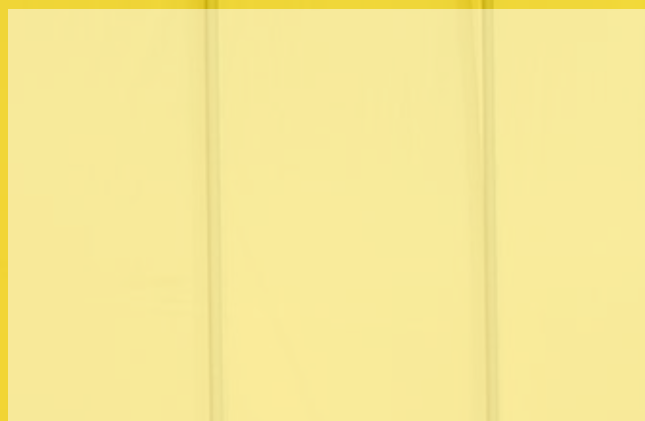
HARTHAM 9  
94152 NEUHAUS AM INN  
DEUTSCHLAND

TEL.: +49 (0) 8503 914 99 0  
FAX: +49 (0) 08503 914 99 33  
E-MAIL: [INFO@AGROTEL.EU](mailto:INFO@AGROTEL.EU)

## **AGROTEL HANDELSGES.M.B.H.**

GOLDBERG 2  
4761 ENZENKIRCHEN  
ÖSTERREICH

TEL.: +43 (0) 7762 2777 0  
FAX: +43 (0) 7762 2777 33  
E-MAIL: [OFFICE@AGROTEL.EU](mailto:OFFICE@AGROTEL.EU)



YOUR CONTACT PERSON

# Agrotel

[www.agrotel.eu](http://www.agrotel.eu)